

Roseville Dry Creek Greenway Bike Trail Planning & Feasibility Study



Project Process & Schedule

- Stakeholder Meetings
- User Surveys
- Community Workshops -December, 2008
- Alignment Alternatives
- Open House
- Final Report - Early 2009

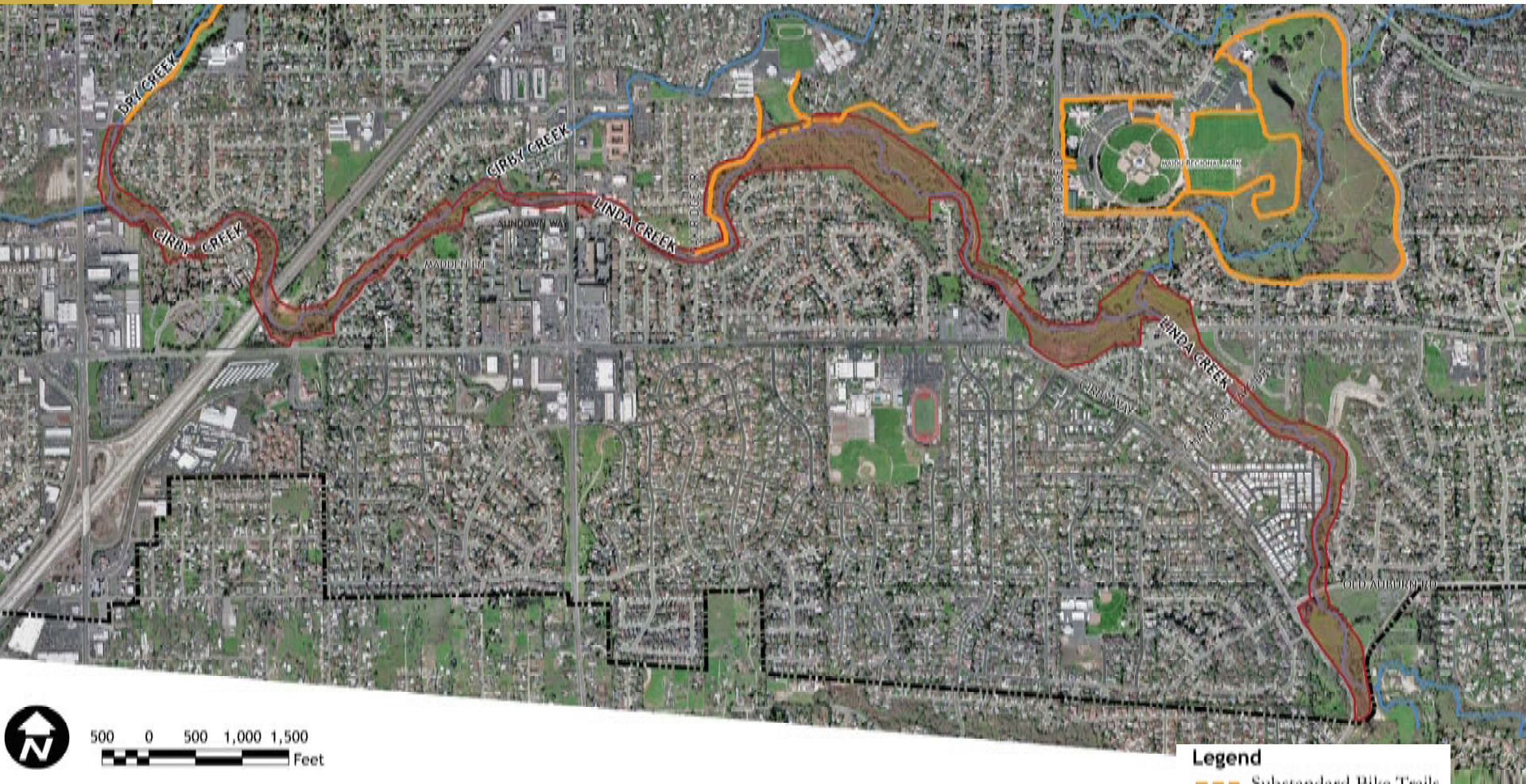
Purpose and Need

- Dry Creek Greenway Multi-use Trail
 - Paved, off-street trail
 - Along Dry, Cirby and Linda Creeks
 - Bicycling, walking, running, dog-walking
 - Fun, education, recreation, transportation
- Vital component of Roseville bikeway and trail system
 - Safe, comfortable, convenient and connected bike route
 - Area of City underserved by bicycle facilities
 - Connect schools/businesses to residential neighborhoods
 - Provide important regional connections
- Trail planned for south side of City
 - West city limits (near City Corporation Yard) to east city limits (near Old Auburn Road)

Purpose and Need

- Project Purpose
 - Study trail from Riverside Ave to City limits (just past Old Auburn Road)
 - Develop locally preferred alternative
 - Adequately address challenges
 - Fit within context of the neighborhoods
- Challenges
 - Neighborhood compatibility
 - Limited availability of right-of-way
 - Roadway crossings
 - Existing utilities and environmental factors
- To address these challenges, City is
 - Convening Stakeholder group
 - Hosting public workshops and other public meetings

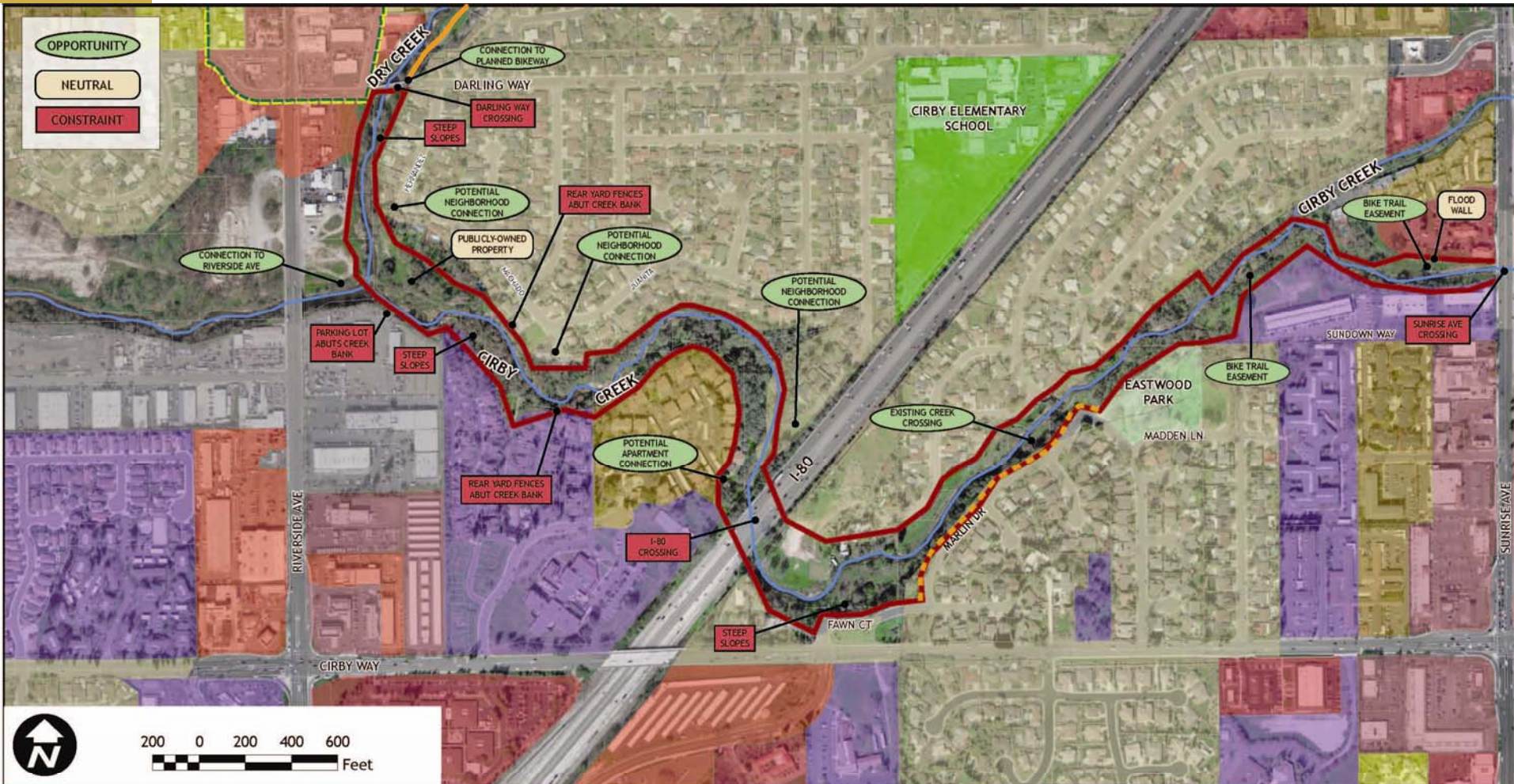
Overview Map



- Legend**
- Substandard Bike Trails
 - Existing Bike Trail
 - Creeks
 - Study Area
 - Roseville City Limits

West Segment

Darling Way to Sunrise Ave



Opportunities & Constraints - West Segment

alta CITY OF ROSEVILLE CALIFORNIA
 PLANNING + DESIGN

Data Provided by:
 City of Roseville, California

Map Prepared by:
 Alta Planning+Design October, 2008

10-27-2008

LEGEND

Substandard Bike Trails	Roseville City Limits	Light Industrial	Urban Reserve	Central Business District
Existing Bike Trail	Infill Planning Area	General Industrial	Single-Family Residential	Community Commercial
Creeks	Riverside Gateway P.A.	Industrial/Business Park	Two-Family Residential	Commercial Mixed Use
Study Area	Southeast Planning Area	Open Space	Attached Housing	General Commercial
	Planned Development	Public/Quasi-Public	Residential Mixed Use	Highway Commercial
		Parks and Recreation	Business Professional	Old Town Historic District
				Regional Commercial

West Segment



NORTH OF APARTMENTS



SOUTH OF DARLING WAY



NORTH OF APARTMENTS



West Segment



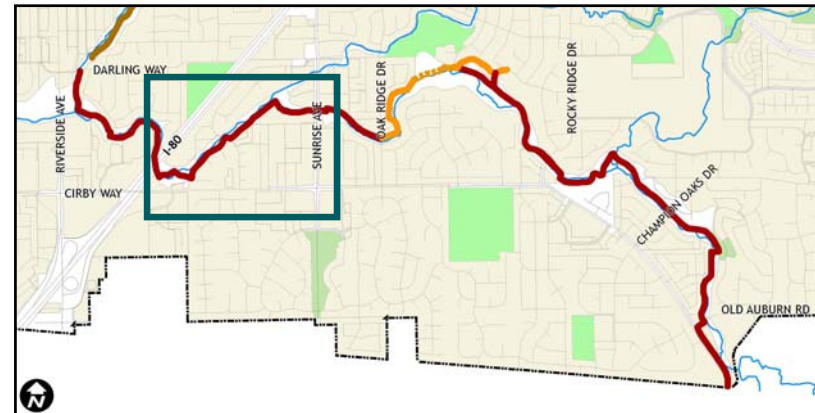
MARLIN DR NEAR EASTWOOD PARK



WEST OF SUNRISE AVE

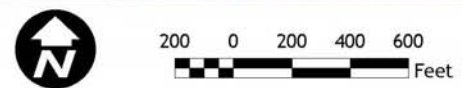
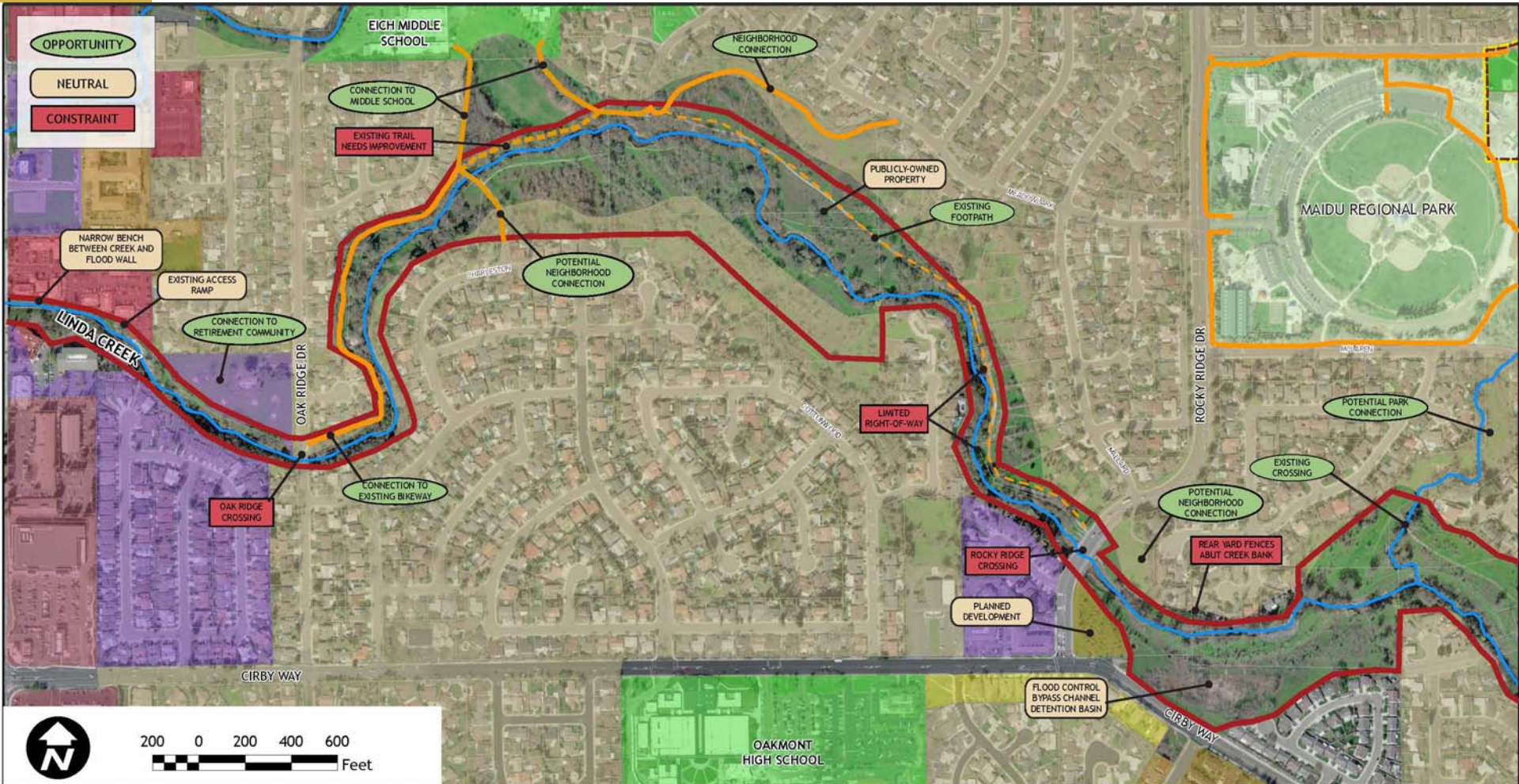


I-80 UNDERCROSSING



Mid Segment

Sunrise Ave to McKinley Dr



Opportunities & Constraints - Mid Segment




Data Provided by:
 City of Roseville, California
 Map Prepared by:
 Alta Planning+Design October, 2008

10-27-2008

LEGEND

<ul style="list-style-type: none"> Substandard Bike Trails Existing Bike Trail Creeks Study Area 	<ul style="list-style-type: none"> Roseville City Limits Infill Planning Area Riverside Gateway P.A. Southeast Planning Area Planned Development 	<ul style="list-style-type: none"> Light Industrial General Industrial Industrial/Business Park Open Space Public/Quasi-Public Parks and Recreation 	<ul style="list-style-type: none"> Urban Reserve Single-Family Residential Two-Family Residential Attached Housing Residential Mixed Use Business Professional 	<ul style="list-style-type: none"> Central Business District Community Commercial Commercial Mixed Use General Commercial Highway Commercial Old Town Historic District Regional Commercial
--	--	---	--	---

Mid Segment



TRAIL EASEMENT WEST OF SUNRISE



SUNRISE AVE



SUNRISE AVE CROSSING



Mid Segment



EAST OF OAK RIDGE DRIVE



SEWER MAINTENANCE ROAD BETWEEN EICH AND ROCKY RIDGE



Mid Segment



EXISTING SUBSTANDARD PATH



CONNECTION TO MEADOWLARK



WEST OF OAK RIDGE DRIVE



Mid Segment



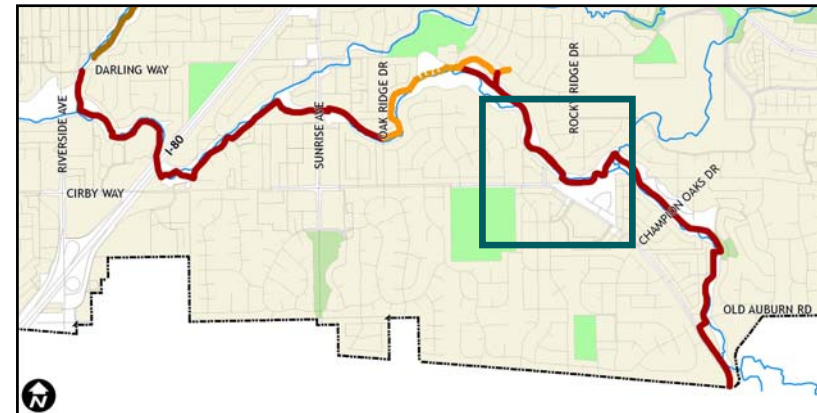
WEST OF ROCKY RIDGE DR



ROCKY RIDGE DR CROSSING

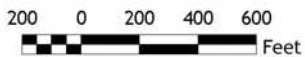
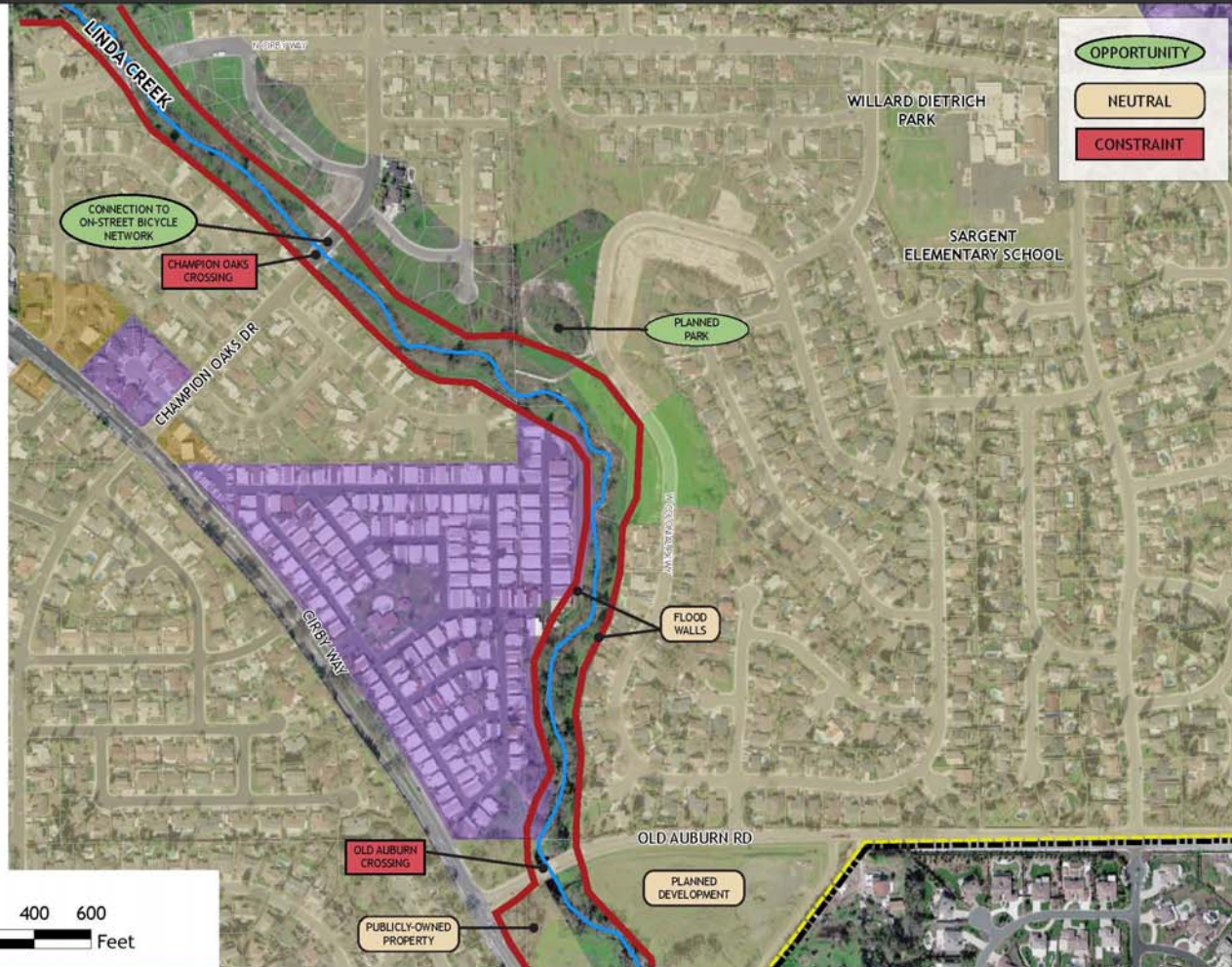


EXISTING CREEK CROSSING



East Segment

McKinley Dr to Old Auburn Rd



Opportunities & Constraints - East Segment



Data Provided by:
City of Roseville, California
Map Prepared by:
Alta Planning+Design October, 2008

10-27-2008

LEGEND

- Substandard Bike Trails
- Existing Bike Trail
- Creeks
- Study Area

- Roseville City Limits
- Infill Planning Area
- Riverside Gateway P.A.
- Southeast Planning Area
- Planned Development

- Light Industrial
- General Industrial
- Industrial/Business Park
- Open Space
- Public/Quasi-Public
- Parks and Recreation

- Urban Reserve
- Single-Family Residential
- Two-Family Residential
- Attached Housing
- Residential Mixed Use
- Business Professional

- Central Business District
- Community Commercial
- Commercial Mixed Use
- General Commercial
- Highway Commercial
- Old Town Historic District
- Regional Commercial

East Segment



BETWEEN N CIRBY & CHAMPION OAKS



N CIRBY WAY



CHAMPION OAKS DR



East Segment



BETWEEN CHAMPION OAKS & OLD AUBURN



OLD AUBURN ROAD



Questions?

